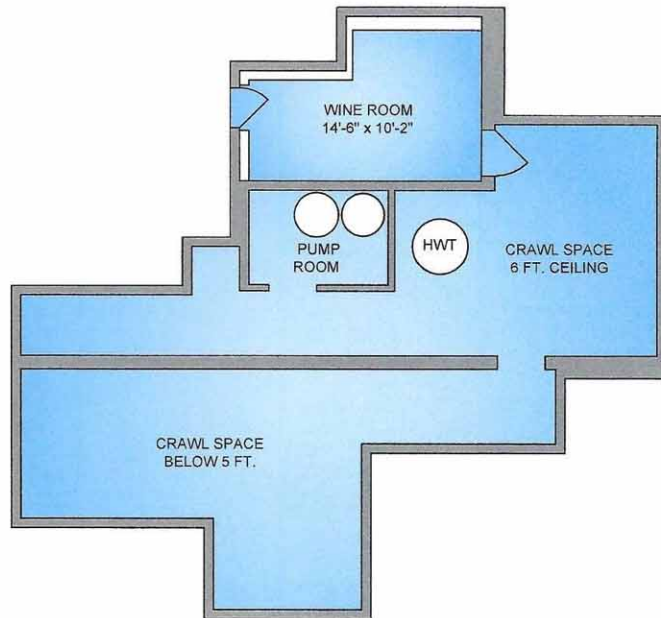
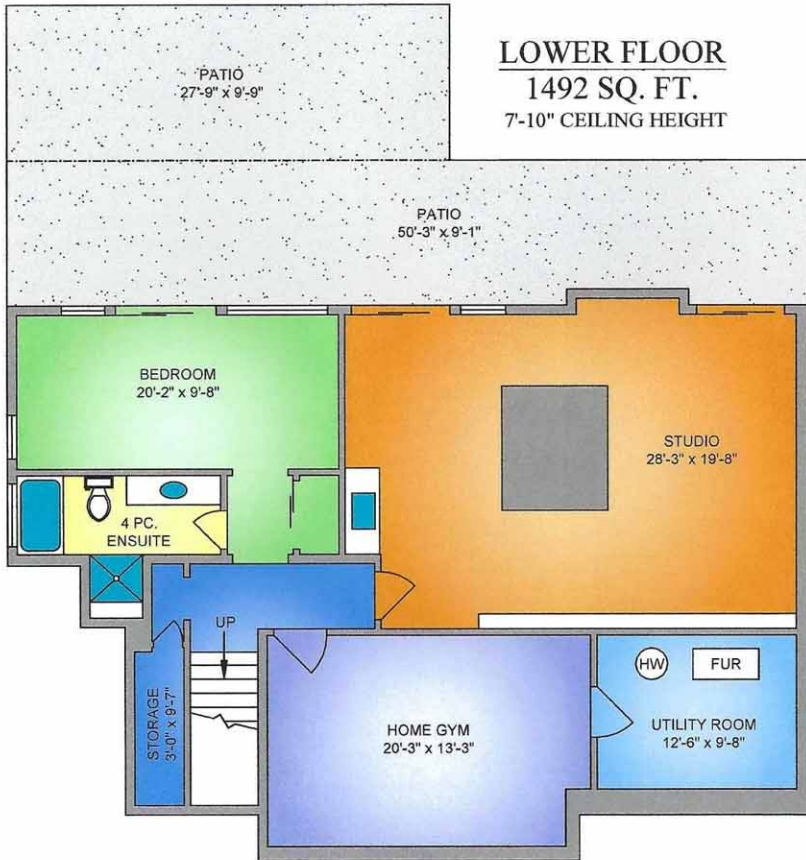


LOWER FLOOR

1492 SQ. FT.

7'-10" CEILING HEIGHT



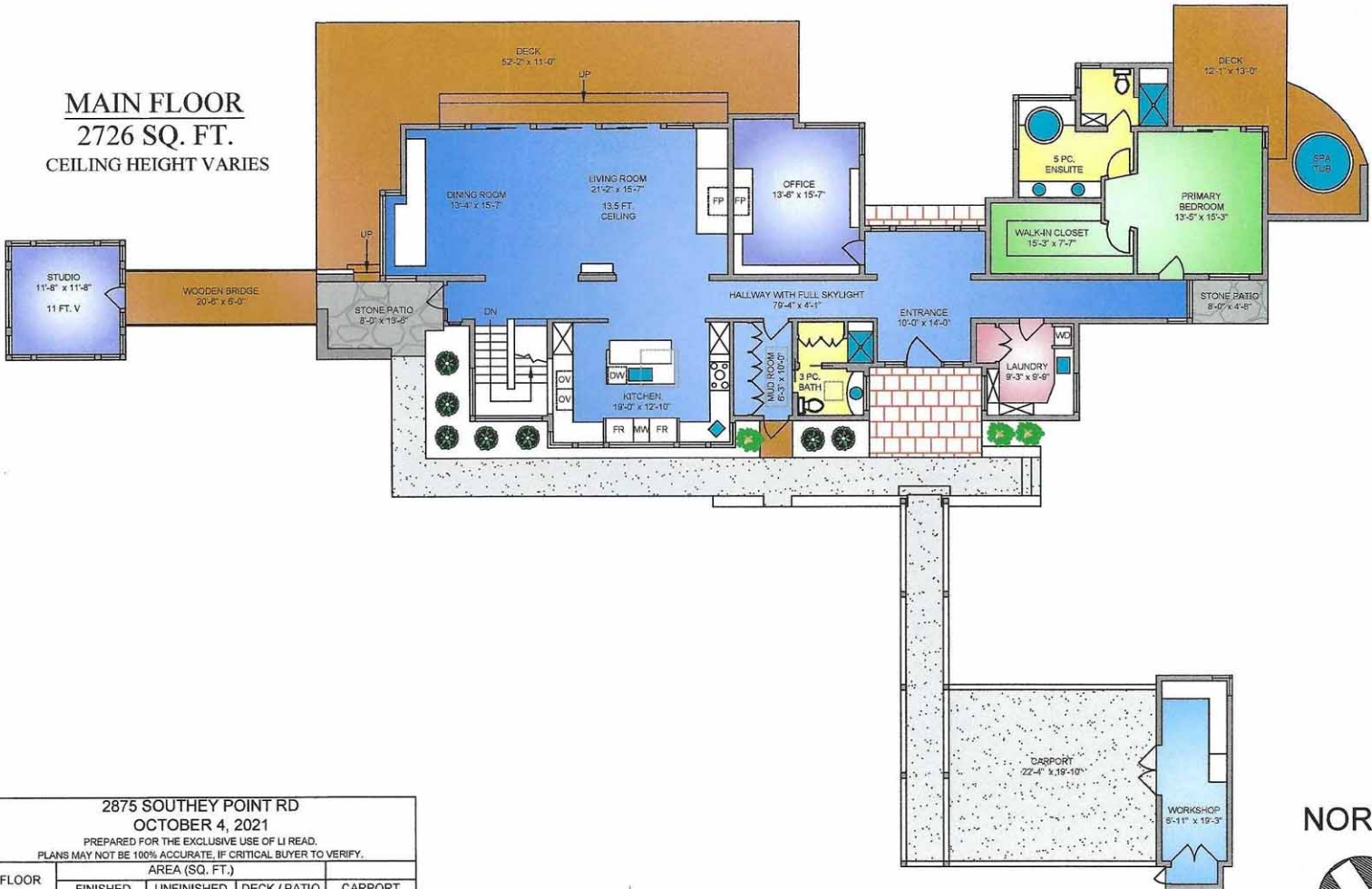
2875 SOUTHEY POINT RD
OCTOBER 4, 2021
PREPARED FOR THE EXCLUSIVE USE OF LI READ.
PLANS MAY NOT BE 100% ACCURATE, IF CRITICAL BUYER TO VERIFY.

FLOOR	AREA (SQ. FT.)			CARPORT
	FINISHED	UNFINISHED	DECK / PATIO	
MAIN	2726	-	864	603
LOWER	1492	195	720	-
TOTAL	4218	195	1584	603

NORTH



MAIN FLOOR
2726 SQ. FT.
 CEILING HEIGHT VARIES



2875 SOUTHEY POINT RD
 OCTOBER 4, 2021
 PREPARED FOR THE EXCLUSIVE USE OF LI READ.
 PLANS MAY NOT BE 100% ACCURATE, IF CRITICAL BUYER TO VERIFY.

FLOOR	AREA (SQ. FT.)			
	FINISHED	UNFINISHED	DECK / PATIO	CARPOR
MAIN	2726	-	864	603
LOWER	1492	195	720	-
TOTAL	4218	195	1584	603

PROPER MEASURE
 FROM PRECISION TO PERFECTION

250-415-0041
 karyn@propermeasure.com
 www.propermeasure.com

