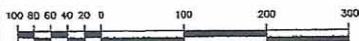


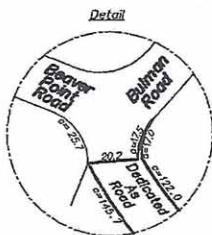
Plan Showing Proposed Subdivision Of:
The North 1/2 Of The North West 1/4 Of Section 59,
And The South 1/2 Of The South West 1/4 Of
Section 73, South Salt Spring Island, Cowichan
District, Except Part In Plan 17520.
P.I.D. 009-744-053



Scale = 1:5000

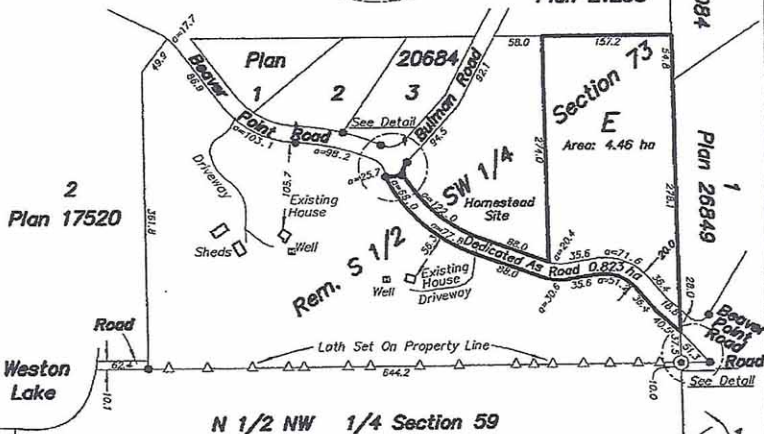
Dated this 8th day of April, 2020.

Distances shown are in metres.



B
Plan 21238

A
Plan 31084

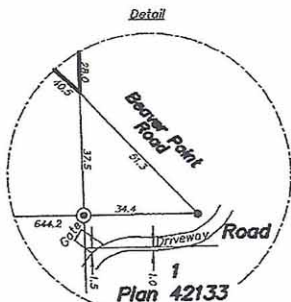


1
Plan 26849

1
Plan 42133

1
Rem A
Plan 32045

N 1/2 NW 1/4 Section 59



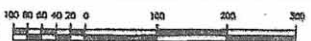
1
Plan 42133

Wey Mayenburg Land Surveying Inc.
 www.weysurveys.com
 #4-2227 James White Boulevard
 Sidney, BC V8L 1Z5
 Telephone (250) 656-5155
 File: 13015Opt1/pro/LE

3 WP64944

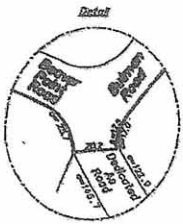
MA (1)

Plan Showing Proposed Subdivision Of:
The North 1/2 Of The North West 1/4 Of Section 59,
And The South 1/2 Of The South West 1/4 Of
Section 73, South Salt Spring Island, Cowichan
District, Except Part In Plan 17520.



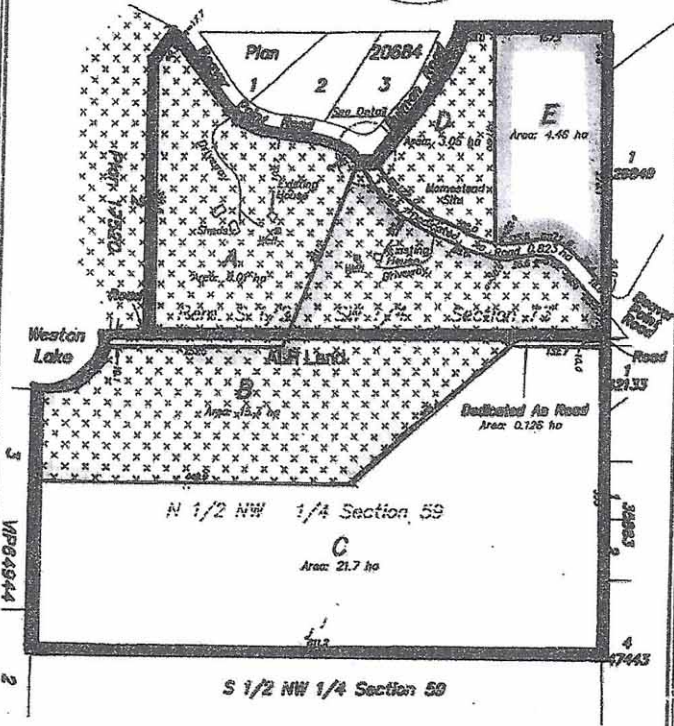
Scale = 1:5000

Dated this 10th day of May, 2016.
 Distances shown are in metres.



Legend

- Current Parcel Boundaries
- XXX ALR Land



Revised to meet new lot sizes

Way Meyerburg Land Surveying Inc.
 www.wayssurveyors.com
 81-2227 James White Boulevard
 Sidney, BC V6L 1Z6
 Telephone (250) 855-5135